

## BULLDOZER WEAR PARTS

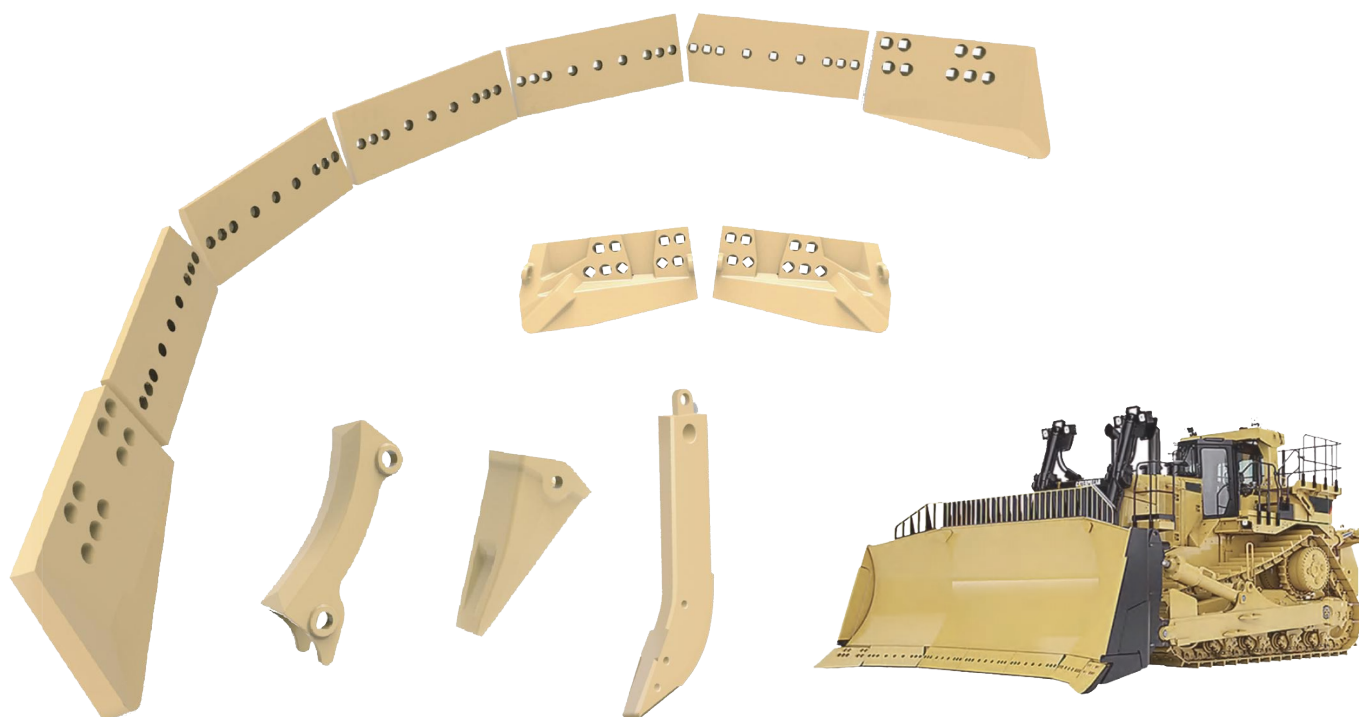
**Cutting edges and end bits,  
Ripper shanks**

Hardness  
**Aver. 450 HB**

Tensile Strength  
**>1500 Mpa**

Impact Strength  
**>20 J**

TEMPUS Wear Parts supply full range of bulldozer wear parts, quenched and tempered to be wear-resistant in tough working environments.



### Product Features

- More than 10,000 part numbers for most popular brands in the market.
- TEMPUS400 heat treated manganese steel to work for construction job.
- TEMPUS500 heat treated boron steel to work at mine sites.
- Aftermarket replacement for OEM or customized parts for your machine.

### Product list

D8					
Part number	Description	Dimension	Qty	Bolts	Nuts
M4T6381	Center Edge	DBF 28X330X1352	1	9*4J9058	9*2J3507
M6Y5540	End Edge	DBF 28X330X800	2	5*4J9058	5*2J3507
M8E4193	End Bit RH	HCEB 40X403X597	1	7*4J9058	7*2J3507
M8E4194	End Bit LH	HCEB 40X403X597	1	7*4J9058	7*2J3507

D9					
Part number	Description	Dimension	Qty	Bolts	Nuts
M7T5701	Center Edge	DBF 35X330X2260	1	15*4J9208	15*2J3507
M7T9125	End Edge	DBF 35X330X800	2	5*4J9208	5*2J3507
M8E4197	End Bit (R)	HCEB 50X405X610	1	7*4J9208	7*2J3507
M8E4196	End Bit (L)	HCEB 50X405X610	1	7*4J9208	7*2J3507

D10					
Part number	Description	Dimension	Qty	Bolts	Nuts
M9W6658	HD-Center Edge	DBF 45X406X847	3	5*5P8823	5*3K9770
M9W6657	HD-End Edge	DBF 45X406X858	2	5*5P8823	5*3K9770
M8E4198	End Bit (R)	HCEB 50X483X737	1	7*5P8823	7*3K9770
M8E4199	End Bit (L)	HCEB 50X483X737	1	7*5P8823	7*3K9770
M8E4541CT	Cast HD-End Bit (R)	CEB 50X483X737	1	5*5P8823	5*3K9770
M8E4542CT	Cast HD-End Bit (L)	CEB 50X483X737	1	5*5P8823	5*3K9770
M8E4541CTHD	Cast HHD-End Bit (R)	CEB 60X483X737	1	5*5P8823	5*3K9770
M8E4542CTHD	Cast HHD-End Bit (L)	CEB 60X483X737	1	5*5P8823	5*3K9770

D11					
Part number	Description	Dimension	Qty	Bolts	Nuts
M9W4495	HD-Center Edge	DBF 60X406X1098	1	9*5P8823	9*3K9770
M9W4494	HD-End Edge	DBF 60X406X1019	2	9*5P8823	9*3K9770
M9W4493	HD-Intermediate Edge	DBF 60X406X1022	2	9*5P8823	9*3K9770
M8E4545	HD-End Bit (R)	HCEB 60X508X813	1	9*5P8823	9*3K9770
M8E4546	HD-End Bit (L)	HCEB 60X508X813	1	9*5P8823	9*3K9770
M9W4495CT	Cast Center Edge	CEB 85X431X1098	1	9*5P8823	9*3K9770
M9W4494CT	Cast End Edge	CEB 85X431X1019	2	9*5P8823	9*3K9770
M8E4545CT	Cast End bit (R)	CEB 76X482X813	1	9*5P8823	9*3K9770
M8E4546CT	Cast End bit (L)	CEB 76X482X813	1	9*5P8823	9*3K9770

D155					
Part number	Description	Dimension	Qty	Bolts	Nuts
M1757026310	Cutting edge	DBF 25X254X1063	3	7*1757111454	7*1757111530
M1757122272	End bit	HCEB 35X330X546	1	7*1757111463	7*1757111530
M1757122282	End bit	HCEB 35X330X546	1	7*1757111463	7*1757111530

D375					
Part number	Description	Dimension	Qty	Bolts	Nuts
M1987211181	Cutting edge	DBF 38X406X857	2	5*1987121710	5*1957161950
M1957161550	Cutting edge	DBF 38X406X887	2	6*1987121710	6*1957161950
M1957161930	End bit	HCEB 60X483X749	1	8*1987121720	8*1987161950
M1957161940	End bit	HCEB 60X483X749	1	8*1987121720	8*1987161950

D475					
Part number	Description	Dimension	Qty	Bolts	Nuts
M1987131550	Cutting edge	DBF 45X406X1187	2	8*1987121850	8*1987121911
M1987131540	Cutting edge	DBF 45X406X857	2	5*1987121850	5*1987121911
M1987131520	End bit	HCEB 60X559X762	1	8*1987121860	8*1987121911
M1987131530	End bit	HCEB 60X559X762	1	8*1987121860	8*1987121911

## LOADER WEAR PARTS

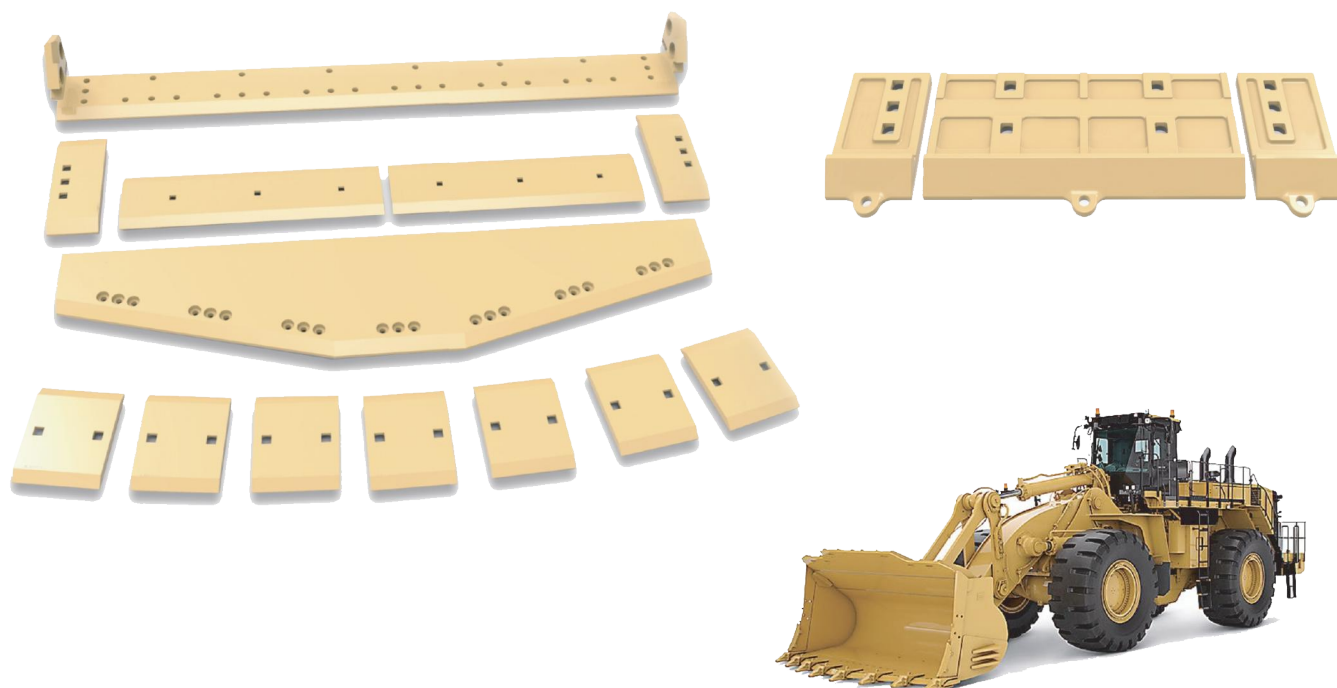
**Cutting edges and Segments,  
Half Arrows, Lip Shrouds**

Hardness  
**Aver. 450 HB**

Tensile Strength  
**>1500 Mpa**

Impact Strength  
**>20 J**

MTW Wear Parts supply full range of loader wear parts, quenched and tempered to be wear-resistant in tough work-ing environments.



### Product Features

- More than 12,000 part numbers for most popular brands in the market.
- TEMPUS500 heat treated boron steel to work at tough conditions.
- Tailored casting alloy A500 and A500N for medium and heavy-duty working condition.
- Aftermarket replacement for OEM or customized parts for your machine.

### Product list

950 Corner Guard System					
Part number	Description	Dimension	Qty	Bolts	Nuts
M6W2987	Base Edge With Segment Holes	SBFY 25X244X2614	1	18*4F4042	18*2J3507
M5V7276	Base Edge For Bolt-on Edges	SBFY 25X244X2614	1	18*4F4042	18*2J3507
M1U2412	Center	DBF 30X360X1148	2	3*4F4042	3*2J3507
M4T8101	End	DBF 32X498X170	2	3*4F4042	3*2J3507
M1321031	HD Center	DBF 35X362X1148	2	3*4J9208	3*2J3507
M1321033	HD End	DBF 35X498X170	2	3*4J9208	3*2J3507

966 G GII H Corner Guard System, Material Handling					
Part number	Description	Dimension	Qty	Bolts	Nuts
M7I3015	Base Edge With Segment Holes	SBFY 38X300X3193	1	30*5P8823	30*3K9770
M1006668	Center	DBF 30X360X1399	2	3*5P8823	3*3K9770
M3G6395	End	DBF 35X514X203	2	3*5P8823	3*3K9770
M1406823	HD Center	DBF 35X360X1400	2	3*5P8823	3*3K9770
M1677430	HD End	DBF 38X512X203	2	3*5P8823	3*3K9770
M1359410	Heavy Duty Wider Center	DBF 35X406X1403	2	3*5P8823	3*3K9770
M1004044	Heavy Duty Wider End	DBF 40X559X203	2	3*5P8823	3*3K9770
M1006668HA	HA Center (Cast)	CHA 45X397X898	3	4*5P8823	4*3K9770
M3G6395HAR	HA End RH (Cast)	CHA 45X397X241	1	3*5P8823	3*3K9770
M3G6395HAL	HA End LH (Cast)	CHA 45X397X241	1	3*5P8823	3*3K9770

980 C Corner Guard System					
Part number	Description	Dimension	Qty	Bolts	Nuts
M9V6574	Base Edge With Segment Holes	SBFY 45X305X3315	1	30*5P8823	30*3K9770
M7V4188	Base Edge For Bolt-on Edges or Teeth	SBFY 45X305X3314	1	18*5P8823	18*3K9770
M1U0762	Center	DBF 35X406X1403	2	3*5P8823	3*3K9770
M1U0761	End	DBF 40X558X263	2	3*5P8823	3*3K9770
M1004047	HD Center	DBF 40X406X1406	2	3*5P8823	3*3K9770
M1004043	HD End	DBF 45X558X263	2	3*5P8823	3*3K9770
M2174725	HA Center (Cast)	CHA 45X425X933	3	4*5P8823	4*3K9770
M2174726	HA End (Cast)	CHA 48X425X266	2	6*5P8823	6*3K9770
M2174725TP	Bolt on Top Plate Center	DBF 32X343X933	3	4*5P8823	4*3K9770
M2174726TPR	Bolt on Top Plate RH	DBF 32X340X152	1	3*5P8823	3*3K9770
M2174726TPL	Bolt on Top Plate LH	DBF 32X340X152	1	3*5P8823	3*3K9770
M2174725N	Narrow HA Center (Cast)	CHA 48X324X933	3	2*5P8823	2*3K9770

988 F Spade Nose Rock					
Part number	Description	Dimension	Qty	Bolts	Nuts
M4E7616	Spade Nose Base Edge	SPBY 50X655X3772	1	27*6V6535	27*3K9770
M9U4713	Spade Nose Base Edge Without Holes	SPB 50X724X3772	1	/	/
M1019350	Center	DBF 38X482X1330	1	9*6V6535	9*3K9770
M1019351	End RH	DBF 38X482X1422	1	6*6V6535	6*3K9770
M1019352	End LH	DBF 38X482X1422	1	6*6V6535	6*3K9770
M1073540	HD Center	DBF 50X483X1333	1	9*6V6535	9*3K9770
M1073543	HD End LH	DBF 50X482X1422	1	6*6V6535	6*3K9770
M1073544	HD End RH	DBF 50X482X1422	1	6*6V6535	6*3K9770
M1019350FHA	Half Arrow Center (Fabricated)	FHA 45X343X1320	1	9*6V6535	9*3K9770
M1019351FHA	HA End RH (Fabricated)	FHA 45X343X1371	1	6*6V6535	6*3K9770
M1019352FHA	HA End LH (Fabricated)	FHA 45X343X1371	1	6*6V6535	6*3K9770
M1099080	HA Segment (Cast)	CHA 50X478X342	3	3*6V6535	3*3K9770
M1099081	HA Segment RH (Cast)	CHA 50X478X342	2	3*6V6535	3*3K9770
M1099082	HA Segment LH (Cast)	CHA 50X478X342	2	3*6V6535	3*3K9770
M1099080HD	HD HA Segment (Cast)	CHA 50X452X342	3	3*6V6535	3*3K9770
M1099081HD	HD HA Segment RH (Cast)	CHA 50X451X342	2	3*6V6535	3*3K9770
M1099082HD	HD HA Segment LH (Cast)	CHA 50X451X342	2	3*6V6535	3*3K9770

## CRADER WEAR PARTS

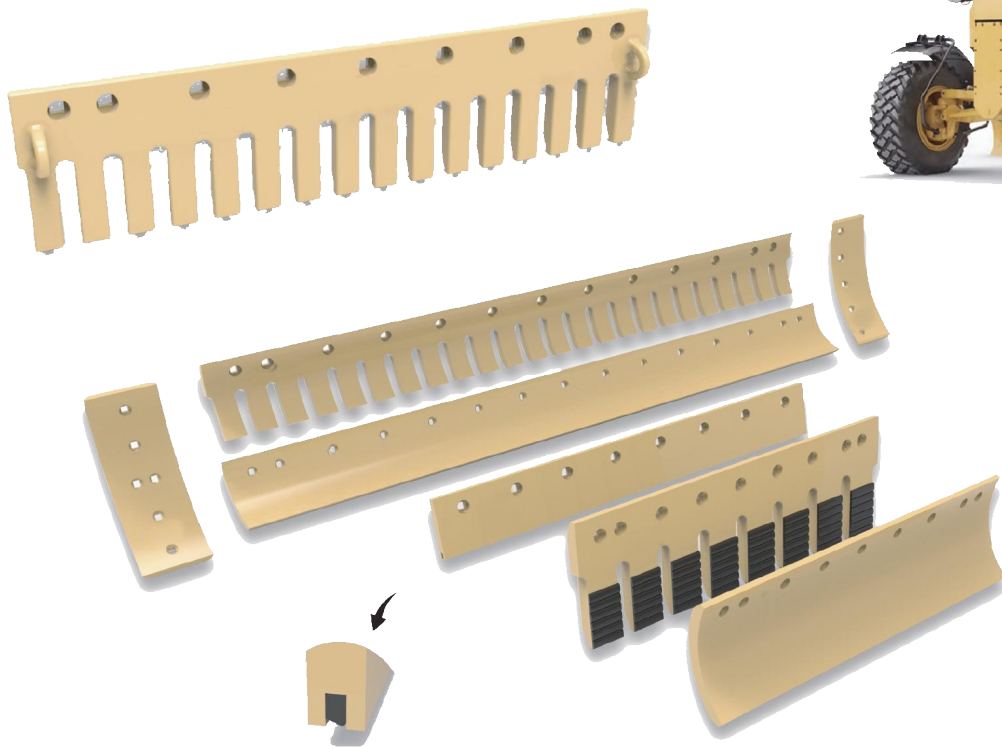
**Grader Blades, Snowplow Blades, Perforated Blades, Serrated Grader Blades**

Hardness  
**Aver. 450 HB**

Tensile Strength  
**>1500 Mpa**

Impact Strength  
**>20 J**

TEMPUS Wear Parts supply full range of grader wear parts, quenched and tempered to be wear-resistant in tough working environments.



### Product Features

- Full range of different sizes to suit all popular brands in the market
- TEMPUS500 heat treated boron steel to work at tough conditions.
- C80 high carbon steel to work economically.
- Carbide inserted snowplow blades are suitable for snow removing

### Product list

Grader Blades List						
Part number	Description	Dimension	Machine Model	Holes' Qty	Bolts	Nuts
M5D9553	Grader Blade	DBC 16X152X1828	120, 1208, 120G, 120H, 120H ES, 120H NA, 130G, 135H, 135H NA, 140, 140, 140H 140H ES, 140H NA, 12F, 12G, 12H, 12H ES, 12H NA, 14E 14G, 16, 16G	13	3F5108	4K0367
M5D9554	Grader Blade	DBC 16X152X2133	120G, 140G, 14E, 12E	15	3F5108	4K0367
M7D1158	Grader Blade	DBC 16X203X2133	160H, 14H NA, 14G, 14H 160H, 120G, 140G, 140H NA, 135H NA, 120H NA, 12H NA 130G, 163H, 143H, 160H ES 160H NA, 140H ES	15	5J4773	213506
M5D9561	Grader Blade	DBC 16X203X2133	16, 140H, 12H, 120H, 140H 140H ES, 143H, 12H ES 135H, 143H, 12H NA	15	3F5108	4K0367
M5D9562	Grader Blade	DBC 16X203X1828	16, 140H, 12H, 120H, 140H 140H ES, 143H, 12H ES 135H, 143 H, 12H NA	13	3F5108	4K0367
M5D9558	Grader Blade	DBC 19X203X1828	120G, 120H, 120H ES	13	3F5108	4K0367
M5D9559	Grader Blade	DBC 19X203X2133	1408, 130G, 120G, 16, 140G 12G, 140H, 12G, 140H, 135H 120H, 12H, 140H, 160H, 120H ES, 12H ES, 140H ES 120H NA	15	3F5108	4K0367
M7D9999	End Bit	OV 16X235X593	93U, 49G, 90Z, 91Z, 16G, 16, 657E	8	1J6762	233506
M6Y2805	End Bit	OV 13X235X554	160H, 160H ES, 140H ES 140H NA, 12H, 140H, 143H 163H, 163H NA, 160H NA	8	1J6762	213506
M2337012141	Grader Blade	DBC 13X152X1524	GD313, GD461	9	2327012580	2327012480
M2327012143	Grader Blade	DBC 16X152X1828	GD510, GD511, GD521, GD523 GD525, GD611, GD621, GD623, GD625, GD661	9	2327012450	2327012480
M2347012710	Grader Blade	DBC 16X203X2133	GD705, GD725	13	2347032230	2347032290
M2357012140	Grader Blade	DBC 19X203X2438	GD825	16	2347032260	2347032290
M2327052190	End Bit	OV 13X228X488	GD510, GD511, GD521, GD523, GD525, GD605, GD621, CD623, GD625, GD661	6	2327012460	2327012480

# Track Shoe

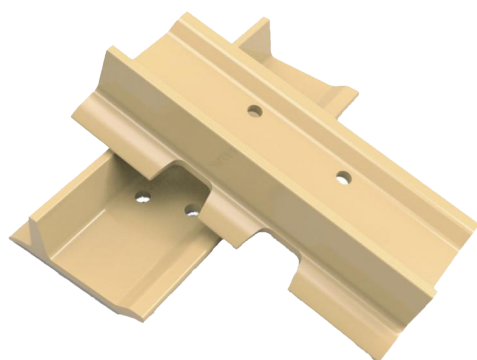
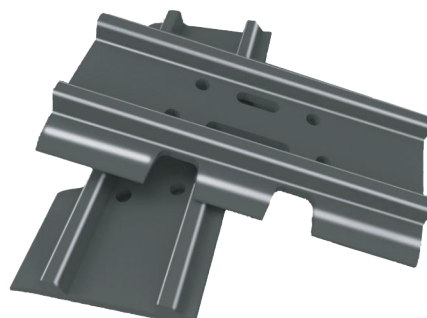
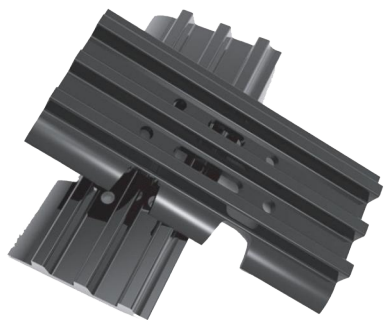
**Bulldozer Track Shoe, Excavator Track Shoe, Track Shoe for other crawler system**

Hardness  
**Aver. 450 HB**

Tensile Strength  
**>1500 Mpa**

Impact Strength  
**>20 J**

TEMPUS Wear Parts supply full range of track shoe, quenched and tempered to be wear-resistant in tough working environments.



## Product Features

- Full range of different sizes to suit all popular brands in the market
- TEMPUS500 heat treated boron steel to work at tough conditions.
- Aftermarket replacement for OEM or customized parts for your machine.

### Product list

Single Grouser				
Link Pitch	Thickness	Width	Grouser Height	Machine Model
171	12	199.6	62	D4D, D5B, D40A, D51-EX, 450J, PR711, PR721
188	13	225	70	D6M, D6N
203	12/14/14.7	132.5	77	D6H, D6R, D65E, PR734XL
216	14.3/16/17/19	250/250/256.5/245.5	86.3/88/99/103	D7, D8N/R/T, PR744L, PR752
228	17/19	266/261	97/96.5	D8H, D8K, D8L, D120A, D125A, D155A
240	20	285	104	D9N/R/T
260	20.64/23	303.2/299	110.3/123	D10N/R/T, D275A, D275AX, D355A
280	23	322	116	D375A, TD40
317	25	369	127	D11N/R, D475A

Double Grouser				
Link Pitch	Thickness	Width	Grouser Height	Machine Model
190	13	217	48	PC200-6/7/8, ZX250
203	14.5	235	56.5	PC300, 963 LGP
216	15.5	251	64.5	330, 345, PC400
260	21/23.5	302	71/73.5	385, 395, PC650, PC800, PC1250, ZX850

Triple Grouser				
Link Pitch	Thickness	Width	Grouser Height	Machine Model
135	6	154	14	PC40-7, PC60
140	8.5	163	18	FL4
154	6	165	20	PC70, EX60LC
171	8/8.5/9.5/10/12	198.9	25	EX100, EX120, 953, CAT312
190	8/8.5/10/12	219	26	PC200, SK200, EC210, CAT320
203	11/13	28	236	PC300, SK300, EC300, CAT325
216	11/13/14/16/18	247	30/36	PC400, ZX460, CAT330

## Teeth & Adaptors

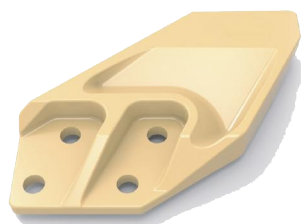
**Bucket Teeth and Adaptors, Ripper Teeth, Protector, Heel Shroud**

Hardness  
**Aver. 450 HB**

Tensile Strength  
**>1500 Mpa**

Impact Strength  
**>20 J**

TEMPUS Wear Parts supply big range of teeth and adaptors, quenched and tempered to be wear-resistant in tough working environment.



### Product Features

Aftermarket replacement for OEM or customized parts for your machine.

Tailored casting alloy A500 and A500N for medium and heavy-duty working condition.

### Product list

J Series List		
Model	Description	Part number
J200	Rock Chisel Teeth	1U3202
	Rock Chisel Teeth	1U3202RC
	Twin Tiger Teeth	1U3202TL
	Penetration Bucket teeth	1U3202PT
	Twin Tiger Teeth	1U3202WTL
	Adapter	1193205
	Adapter	1193204
J225	Rock Chisel Teeth	6Y3222
	Rock Chisel Teeth	6Y3222RC
	Twin Tiger Teeth	6Y3222TL
	Twin Tiger Teeth	6Y3222WTL
	Adapter	6Y3224
J250	Rock Chisel Teeth	1U3252
	Penetration Bucket teeth	1U3252PT
	Rock Chisel Teeth	1U3252RC
	Twin Tiger Teeth	1U3252TL
	Twin Tiger Teeth	1U3252WTL
J300	Adapter	6Y3254
	Rock Chisel Teeth	1U3302
	Rock Chisel Teeth	1U3302RC
	Twin Tiger Teeth	1U3302WTL
	Twin Tiger Teeth	1U3302TL
J350	Adapter	3G6304
	Rock Chisel Teeth	1U3352
	Rock Chisel Teeth	1U3352RC
	Twin Tiger Teeth	1U3352TL
	Twin Tiger Teeth	1U3352WTL
J350	Penetration Bucket teeth	1U3352PT
	Adapter	3G8354
	Adapter	6I6354

J Series List		
Model	Description	Part number
J400	Rock Chisel Teeth	7T3402
	Rock Chisel Teeth	7T3402RC
	Twin Tiger Teeth	7T3402WTL
	Penetration Bucket teeth	7T3402PT
	Adapter	6I6404
J450	Rock Chisel Teeth	1U3452
	Rock Chisel Teeth	1U3452RC
	Rock Chisel Teeth	9W8452RC
	Twin Tiger Teeth	9W8452TL
	Twin Tiger Teeth	1U3452TL
	Twin Tiger Teeth	9W8452WTL
	Penetration Bucket teeth	9W8452PT
J550	Adapter	6I6464
	Adapter	8E6464
J550	Rock Chisel Teeth	1U3552
	Rock Chisel Teeth	9W8552
	Penetration Bucket teeth	9W8552PT
	Rock Chisel Teeth	9W8552RC
	Twin Tiger Teeth	1U3552TL
J700	Twin Tiger Teeth	9W8552TL
	Adapter	6I6554
	Adapter	6I6554
J700	Rock Chisel Teeth	6I6602
	Rock Chisel Teeth	6I6602RC
	Twin Tiger Teeth	6I6602TL
	Penetration Bucket teeth	6I6602PT
J800	Adapter	6I6604
	Rock Chisel Teeth	4T4702
	Rock Chisel Teeth	4T4702RC
	Rock Chisel Teeth	3683878

## Bolts & Nuts

### Plow Bolts and Nuts, Track Bolts and Nuts, Hex Bolts and Nuts

Tensile Strength  
**>1500 Mpa**

Yeilding Point  
**>900 Mpa**

Impact Strength  
**>20 J**

TEMPUS Wear Parts supply full range of bolts and nuts, quenched and tempered to be strong enough to work in difer-ent working environments.



### Product Features

Aftermarket replacement for OEM or customized parts for your machine.

Class 10 and Class 12.9 for medium and heavy-duty working condition

### Product list

Plow Bolt		
Name	Part number	Description
Plow Bolt	M-PB58X11X214	5/8"UNC-11X2-1/4"
Plow Bolt	M-PB58X11X3	5/8"UNC-11X3"
Plow Bolt	M-PB34X10X212	3/4"UNC-10X2-1/2"
Plow Bolt	M-PB34X10X234	3/4"UNC-10X2-3/4"
Plow Bolt	M-PB78X9X3	7/8"UNC-9X3"
Plow Bolt	M-PB78X9X312	7/8"UNC-9X3-1/2"
Plow Bolt	M-PB1X8X314	1"UNC-8X3-1/4"
Plow Bolt	M-PB1X8X312	1"UNC-8X3-1/2"
Plow Bolt	M-PB114X7X5	1-1/4"UNC-7X5"

Track Bolt		
Name	Part number	Description
Track Bolt	M-TB58X18X51	5/8"UNF-18X51
Track Bolt	M-TB1X14X75	1"UNF-14X75
Track Bolt	M-TBM14X1.5X45	M14X1.5X45
Track Bolt	M-TBM18X1.5X57	M18X1.5X57
Track Bolt	M-TBM20X1.5X63	M20X1.5X63
Track Bolt	M-TBM20X1.5X68	M20X1.5X68
Track Bolt	M-TBM22X1.5X59	M22X1.5X59
Track Bolt	M-TBM24X1.5X76	M24X1.5X76
Track Bolt	M-TBM27X2X93	M27X2.0X93

Plow Nut		
Name	Part number	Description
Plow Nut	M-PN58X11	5/8"UNC-11
Plow Nut	M-PN34X10	3/4"UNC-10
Plow Nut	M-PN78X9	7/8"UNC-9
Plow Nut	M-PN1X8	1"UNC-8
Plow Nut	M-PN114X7	1-1/4"UNC-7

Track Nut		
Name	Part number	Description
Track Nut	M-TN58X18	5/8"UNF-18
Track Nut	M-TN34X16	3/4"UNF-16
Track Nut	M-TN78X14	7/8"UNF-14
Track Nut	M-TN1X14	1"UNF-14
Track Nut	M-TNM18X1.5	M18X1.5
Track Nut	M-TNM20X1.5	M20X1.5
Track Nut	M-TNM22X1.5	M22X1.5
Track Nut	M-TNM24X1.5	M24X1.5